

Farmborough Road Public School

Newsletter

TERM 1 WEEK 3 2019

PHONE: 4271 1133



**Kindergarten
Students
enjoying their
learning!**



For Your Calendar

13/2	Swimming Carnival
15/2	Dance Fever
24/2	P&C BBQ at Bunnings Warrawong
1/3	TWILIGHT NIGHT

***Onward
And
Upward***

Dear Parents and Carers

Our students are now very settled into their classes and new routines for 2019. Our teachers will this week be inviting you to come and meet the teacher to hear about how learning will look in each classroom. Please try to attend these sessions. The more we work together to develop consistency, the greater rewards for your child.

Your child's safety is very important to us. I would like to ask you to remind your child to be "road safety aware" as they come to and from school each day. We are very fortunate to have our own traffic lights at the entrance gate. This is the only place students and parents should cross. Please ensure your child waits back near the fence when waiting to cross. Pedestrians are **not** to enter or leave the school via the car park gate.

Have a great week
Regards
Michelle Laval



Onward
and
Upward

Email: farmborord-p.school@det.nsw.edu.au
Website: www.farmborord-p.schools.nsw.edu.au



Birthdays

Congratulations to the following students who celebrated their birthday last week.

Ollie 3/2 – Jack 8/2 – Alexis K 5/2

Farmborough Road Facebook Page

All parents and students are invited to 'like' and 'follow' the new Farmborough Road Public School Facebook page in order to stay updated on all school information and events throughout the year.

Parent Orientation Sessions

Parents and Carers are strongly encouraged to learn more about their students classes by attending our Parent Orientation Sessions. Please refer to the table below for the class schedule. Our unit classes will be contacting parents and carers individually to discuss their child's Individual Learning Plans.

<u>Class</u>	<u>Date</u>	<u>Time</u>
Coolangatta Matong	Thu 21 st Feb	2:30 – 3:00pm 5:00 – 5:30pm
Jimboomba Myaree Leamurra	Mon 18 th Feb	3:15 – 3:45pm 5:30 – 6:00pm
Yangah Giralang	Mon 18 th Feb	2:30 – 3:00pm
Yangah Giralang	Wed 20 th Feb	5:00 – 5:30pm
Merinda Yulara	Tues 19 th Feb	2:30 – 3:00pm 5:00 – 5:30pm

P&C News

Hi everyone, please make sure you put these dates in your diaries...

Sunday the 24th of February - The P&C are taking over the BBQ at Warrawong Bunnings from 9am to 4pm, we would love to see some familiar faces supporting our amazing little school.

Friday the 1st of March - The P&C will be holding our annual Twilight night, which is a BBQ/family fun night that we hold every year to welcome both the new and returning families to our school. It's a great way to get together and make new friends. Twilight night consists of food, games, face painting a jumping castle and much more, so be sure to keep an eye out for the note which will be going home by the end of this week.

Erin Oxenbridge
P&C President

Uniform Shop News

Our polo shirts are expected to arrive in time for this Thursday morning. Apologies for the delay in supply at this busy time. We appreciate your patience. Just a reminder that polo shirts are now \$27.

The uniform shop is staffed by parent and grandparent volunteers. We are open every Thursday from 8.30am to 9.15am. We accept cash, cheque or credit card. Purchases made by credit card attract a 2% surcharge. We stock a full range of new school uniforms and secondhand items. Layby is also available.

If you can't make it in on a Thursday morning please leave your order and payment with our lovely office ladies and we will have it ready for you to collect from the office the following Thursday.



ILLAWARRA SPORTS HIGH

SUPPORTING TALENTED ATHLETES THROUGH EDUCATION

2019 Information & Open Night

Monday 25th February 2019
6.00pm til 7.45pm
Illawarra Sports High School Hall
Guru Street, Berkeley



The Open Night will provide parents and students with information regarding local enrolments and the Talented Sports and Development Program.

Information for students in years 5 to 10.
Register your interest online www.illawaspor-h.schools.nsw.gov.au

Please return payment and order forms to the office by
FRIDAY 15th February



SCHOLASTIC
Book Club LOOP
for Parents

LOOP is the Scholastic Book Club
Linked Online Ordering & Payment platform for parents.
To order and pay for Scholastic Book Club by credit card visit:
www.scholastic.com.au/LOOP

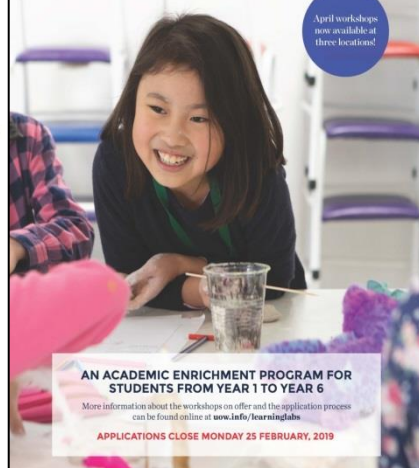


Learning Labs

APRIL 2019



April workshops
now available at
three locations!



AN ACADEMIC ENRICHMENT PROGRAM FOR
STUDENTS FROM YEAR 1 TO YEAR 6

More information about the workshops on offer and the application process
can be found online at www.info/learninglabs

APPLICATIONS CLOSE MONDAY 25 FEBRUARY, 2019



**Parking in a way that blocks
buses and crossings or obscures
sight lines is illegal, putting
children and motorists in danger.**

CHILDREN CROSSING

Children's Crossing

Don't stop within 20 metres before the crossing and 10 metres after the crossing. Penalty exceeds \$439 + 2 Demerit Points



Double Parking

Don't stop on a road between the road centre and another vehicle parked at the side of the road to wait, pick up or drop off passengers. Penalty exceeds \$330 + 2 Demerit Points



Speeding

Don't exceed 40km / hour during the designated school zone hours. Penalty exceeds \$192 + 2 Demerit Points

Think ahead - be patient

Follow the traffic rules within school zones.

There are NO EXCUSES - the cost of taking your children to school depends entirely on YOU.

Effective 1 July 2017.
For a full list of penalties and offences visit
www.rms.nsw.gov.au

WCC © 167940.02.18



FLARE FOOTBALL TERM PROGRAM

4 FEBRUARY - 12 APRIL (TERM 1)

FORMERLY REFERRED TO AS THE FSC ACADEMY



Proudly supported by



ALBION PARK

Terry Reserve
Tuesday or Thursday

BALGOWNIE

Judy Masters Oval
Monday or Friday

WOONONA

Woonona High School
Monday or Wednesday

REGISTER NOW

www.footballsouthcoast.com
0242 858929

Responsibility

Excellence

Respect

Term 1 Calendar 2019 SCHOOLS AS COMMUNITY CENTRE

Information & enquiries please contact

Local Facilitator Allison McKenzie

On 0448254779 or email-

Allison.mckenzie4@det.nsw.edu.au

NSW Schools as Community Centres Project: An initiative Supporting Families in their local

school community to enhance early learning & wellbeing of children birth to 8 years.



Farnborough
Road PS
56

Farnborough
Road,
2526

Unanderra NSW
Ph: 42711133



PARENTS

Tuesday

Wednesday

Thursday

Friday



Barnardos
Australia

Term 2

*Barnardos
Women's
Support Group*

Contact Emma or
Laura

for further details
CALL 42758575
(This is a closed
group)

PLAYGROUP

9.30-11.30am

Starts

12th February
Enjoy free play,
craft, stories,
puzzles & games &
music

Bring fruit
to share.
Tea & coffee
provided

Mums & Bubs

Connect

9.30-11.00am

Starts

13th February
Mum's with kids
under 3 can get
together weekly

to connect &
socialize.
Tea & coffee
provided

Kindy's Starters

Transition to
School

9.15-11.30am

Starts

14th February
Come along
& make some new
friends.

Enjoy getting ready
for school fun.
Please bring your
morning tea. (not
free)

To book please
contact Allison on
0448254779

PLAYGROUP

Paint and Play

9.30-11.00am

Starts

15th February
Enjoy painting,
puzzles & story
time.

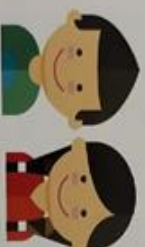
At Berkeley West
Public School
(preschool room)
Bring fruit to share

familiesNSW
supporting families to raise children

NSW
GOVERNMENT
Education &
Communities



FREE
SUPPORTED
PLAYGROUP
FOR THE
COMMUNITY



FARMBOROUGH
Outside School
Hours Care

For all enquiries and
enrolments
please
contact Erin



Transition
to School



School Community Charter

 **Collaborative. Respectful. Communication.**

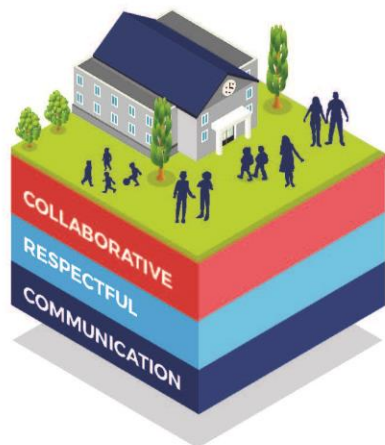
The following School Community Charter outlines the responsibilities of parents, carers, educators and school staff in NSW public schools to ensure our learning environments are collaborative, supportive and cohesive.

What our schools provide

NSW public schools work to create positive environments for students, staff and the entire school community that support student learning. We strive to ensure that every student is known, valued and cared for.

The best education happens when parents and schools work together.

The School Community Charter aligns with the NSW Department of Education Strategic Plan 2018 – 2022.



Positive environments

It is important that our NSW public schools are positive environments and that parents and carers are kept informed of students' progress and school announcements.

Parents and carers can expect:

- to be welcomed into our schools to work in partnership to promote student learning.
- communication from school staff will be timely, polite and informative.
- professional relationships with school staff are based on transparency, honesty and mutual respect.
- to be treated fairly. Tolerance and understanding are promoted as we respect diversity.

We treat each other with **respect**

We **prioritise** the wellbeing of all students and staff

Unsafe behaviour is not acceptable in our schools

We work **together** with the school

Ensuring respectful learning environments for all members of NSW Public Schools communities.



We create
collaborative
learning
environments

We
all play
a part

We work
in partnership
to promote
student
learning

Communicating with our schools

Our staff will find a time to talk to you when they can give you their full attention. Please remember that while our staff are in class or dealing with other matters, they may not be available to answer your questions immediately.

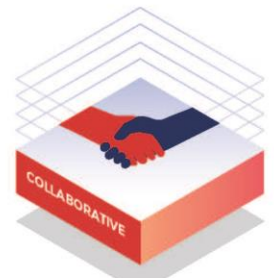
Our schools and communities will make sure that written communication is appropriate, fair and easy to read. We encourage you to use email and social media appropriately to connect with your school and stay up-to-date with up-coming events in the school community.

Our guide for parents, carers and students provides useful information about the complaints process: education.nsw.gov.au/about-us/rights-and-accountability/complaints-compliments-and-suggestions/guide-for-parents-carers-and-students

Respectful communication is a right

In all workplaces people have the right to feel respected. Unacceptable and offensive behaviour has no place in our school communities.

To ensure the wellbeing of students, staff and the community in our schools, steps will be taken to address unacceptable behaviour. This may include restricting contact with the school community or, in more serious cases, referral to NSW Police.



Unacceptable behaviour may include but is not limited to:

- Aggressive or intimidating actions, such as violence, threatening gestures or physical proximity.
- Aggressive or intimidating language, including the use of obscenities, making sexist, racist or derogatory comments or using a rude tone.
- Treating members of the school community differently due to aspects such as their religion or disability.
- Inappropriate and time wasting communication.



Collaborative.
Respectful.
Communication.

School Community Charter

education.nsw.gov.au